



DELPRO1638™

INTERLOCKING PVC PANEL

• AGRICULTURAL • INDUSTRIAL • COMMERCIAL • RESIDENTIAL •



• ABOUT DELPRO 1638™ •

The panels are made from 100% exterior grade with a virgin PVC formula. The finished product provides a smooth and seamless appearance as well as providing a waterproof wall or ceiling.

The water resistant panel quality makes DelPro 1638™ a durable interlocking plastic cladding for walls and ceilings, especially in damp areas.

With a strong resistance to color change and fading, Delpro 1638™ is ideal for car wash wall and ceiling coverings, however, it can also be used for new and retrofit applications including agricultural, commercial, industrial, and residential.

• ADVANTAGES •

- ✓ Distinctive Tongue and Groove System
- ✓ Quick and Easy Installation
- ✓ Low Maintenance
- ✓ Easy to Clean
- ✓ Economical
- ✓ No Painting Required
- ✓ Bright White, Extremely Smooth Panels
- ✓ Made with 100% Exterior Grade Virgin PVC Formula
tried and tested for two decades
- ✓ CFIA Approved
- ✓ Hidden Fastener
- ✓ Class A Fire Rating
- ✓ 16" Wide Panels
- ✓ 15 Years Warranty

Visit www.delpro1638.com for more information.

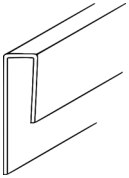
• ENJOY THE **STRENGTH** •

• DISCOVER THE *BEAUTY* •

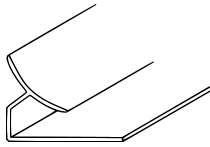
Our panels provide an **efficient and a stylish finish** for walls and ceilings. DelPro 1638™ can be used in new and retrofit applications. The high quality interlocking PVC wall and ceiling panels are **easy to install** and virtually **maintenance free**.

The **water resistant quality** makes DelPro 1638™ a durable cladding for walls and ceilings, particularly in damp areas. With a **strong resistance to color change and fading**, DelPro 1638™ will **neither delaminate, rot, nor absorb water**.

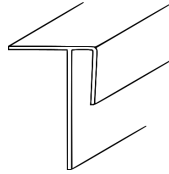
• DELPRO 1638™ TRIM •



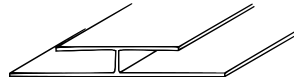
J-Trim



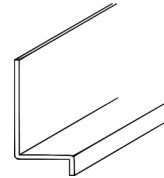
Inside Cove



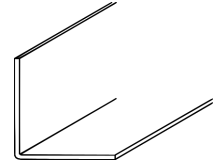
Outside Corner



H-Trim



Base Trim

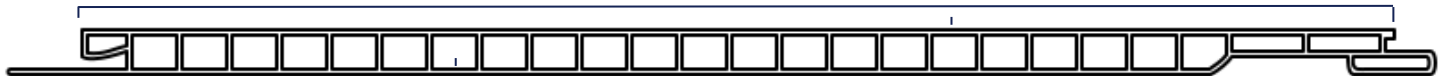


L-Trim

• SPECIFICATIONS •

DelPro 1638™ Smooth Panel

16"



0.04" (wall thickness)

3/8" (panel thickness)

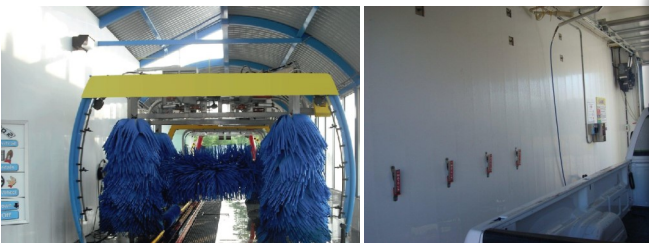
with a **wall thickness of 0.04"** and an **overall panel thickness of 3/8"** it's the most durable PVC panel on the market.

• WHY DELPRO 1638™ ISN'T WIDER THAN 16" •

If you have weight or tension on the panel (insulation or an angled fastener) it creates pressure between both ends and eventually the panel starts to bow or sag. In the PVC paneling industry, it is proven that 16" is the best and maximum width to use. *DelPro 1638™* is easily able to withstand these pressures and will not bow or sag.

• WHY A PANEL THICKNESS OF 3/8" IS BETTER THAN 1/2" •

In the PVC wall paneling industry, unlike lumber, thicker is not always better. The interior walls and the space between the front and back wall of the panel, are the weaker parts of the overall design. If you increase this space (the thicker the panel, the more you stretch the interior wall), you have now effectively decreased the overall impact strength of your panel. Therefore, a 3/8" panel is much stronger and longer lasting than a 1/2" panel.



Phone: 1-604-858-7134

Fax: 1-604-858-6022

www.westform.com