

## Standard Retrofit Master Flash® Two Compounds / 3 Sizes



### Weather Resistance

Designed to withstand the damaging effects of ultra violet light and ozone.

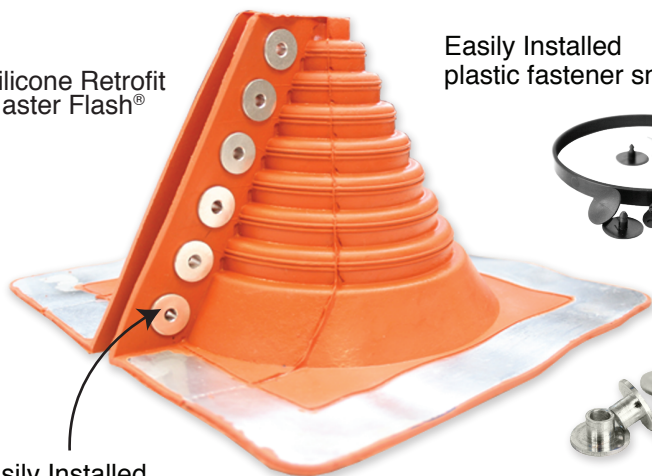


### Base Flexibility

Designed to conform to most panel configurations and roof pitches regardless of pipe location.



Silicone Retrofit Master Flash®



Easily Installed plastic fastener snaps included



Easily Installed aluminum fastener snaps included



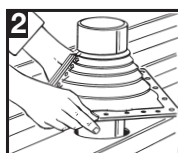
### Modification Made Simple

Easy to see pipe diameters make for painless on-site customization.

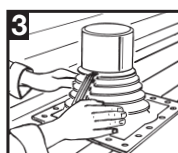
	PIPE SIZE	COMPOUND	PART NO		FLASHING DETAIL	
#1	1/2" - 4" (12 - 101mm)	Black EPDM	RF101BP		A—Top opening diameter	1/2" (12mm)
		Grey EPDM	RF101GP		B—Cut to suit pipe size	1/2" - 4" (12 - 101mm)
		Silicone	RF102RS		C—Base dimensions	8-3/16" (205mm)
#2	4" - 9-1/4" (101 - 235mm)	Black EPDM	RF201BP		A—Top opening diameter	4" (101mm)
		Grey EPDM	RF201GP		B—Cut to suit pipe size	4" - 9-1/4" (101 - 235mm)
		Silicone	RF202RS		C—Base dimensions	14-1/4" (362mm)
#3	9-1/4" - 16-1/4" (235 - 412mm)	Black EPDM	RF301BP		A—Top opening diameter	9-1/4" (235mm)
		Grey EPDM	RF301GP		B—Cut to suit pipe size	9-1/4" - 16-1/4" (235 - 412mm)
		Silicone	RF302RS		C—Base dimensions	21-1/2" (546mm)



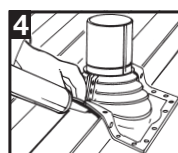
**1** Choose appropriate Retrofit. If necessary trim opening to pipe diameter.



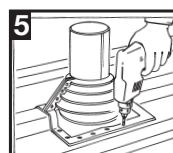
**2** Wrap Retrofit around pipe and install all snap rivets to seal flange



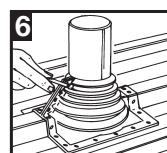
**3** Press Master Flash® down, bending it to conform to roof profile or roof irregularities. A blunt tool will help press flashing into tight roof angles.



**4** Apply silicone sealant between base, roof, and to the top of flashing



**5** Use fasteners to complete sealing. For UPC installation, fastener spacing may not exceed 1-1/2" (38mm)



**6** Install supplied cable tie at uppermost part of Retrofit and apply sealant to any gaps.

To see our complete product line go to [www.aztecwasher.com](http://www.aztecwasher.com)

