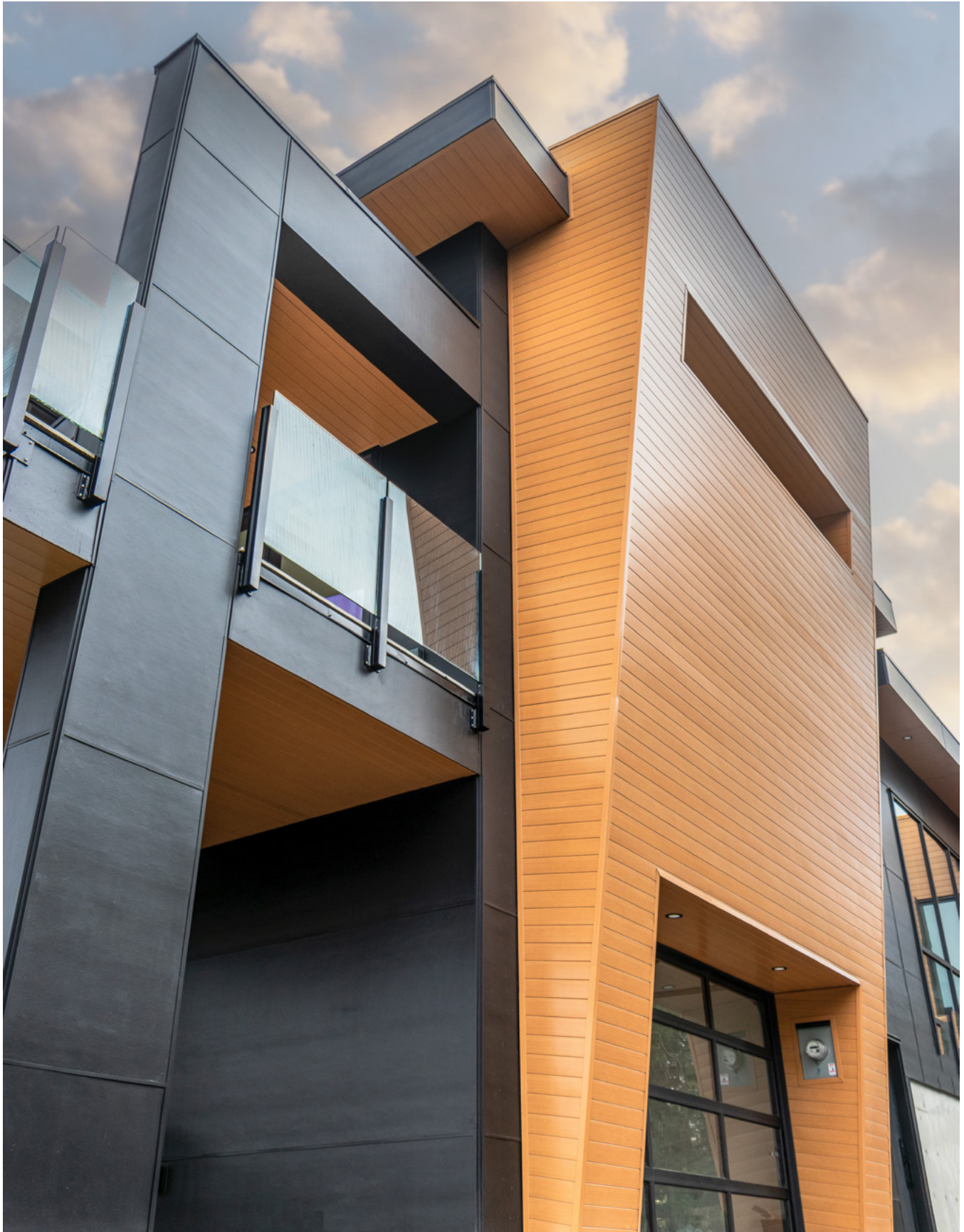




COLOR | CATALOGUE

July, 2025



MATERIALS

Westform Metals carries a broad range of prepaint steel products, focusing specifically on galvanized and 55% aluminum-zinc alloy coated substrates. Available in both coil and flat sheet, our prepainted steel offer represents the most popular colors in the market today fully supported by industry competitive warranties. And you can be confident the quality and service you receive will be world-class.

55% Aluminum-Zinc Alloy Coated Steel

This product is a cold-rolled carbon steel with a metallic coating composed of Aluminum (55%), Zinc (43.4%) and Silicon (1.6%). 55% Aluminum-Zinc Alloy Coated Steel (aka Galvalume™) provides excellent corrosion resistance as well as heat resistance. Whether bare or prepainted, this product offers superior performance in metal roofing, wall panel and other architectural applications.

Galvanized Steel

Galvanized Steel is created through the hot-dip galvanizing process whereby carbon steel coil is submerged in a bath of molten zinc. The steel coil emerges with a metallic coating of zinc on both sides of the strip and is typically identified by its “spangle”. End-use applications well suited for Galvanized Steel include heating and air conditioning duct work and vents, barriers and wall partitions, light-gauge framing, garage and entry doors, mesh screens, appliance and fireplace sections, just to mention a few.

Galvannealed Steel

Galvannealed Steel (aka “satin coat”) is a hot-dipped galvanized steel that is immediately heated causing the zinc coating to alloy with the iron in the steel. This results in a metallic coating composed of 90% zinc and 10% iron. Galvannealed Steel has a matte finish with no spangle and is well suited for post-painting or powder coating applications such as exposed HVAC ductwork and door frames.

PrePainted Steel

Pre-Painted Steel products are available in both SMP and PVDF paint systems, on either Galvanized or 55% Aluminum-Zinc Alloy Coated Steel substrates. Available in both coil and flat sheet, our prepainted steel offer represents the most popular colors in the market today, fully supported by industry competitive warranties. These products are used in a variety of building and architectural applications.

Westform Metals also offers a wide variety of specialty finished products that provide the durability and longevity of steel but with the visual aesthetics of other materials. Our specialty finishes include.

Cascadia TEX™

Cascadia TEX are steel products coated with a texturized paint system giving the product added depth, beautiful color, low reflection and increased durability. As a prepainted product, Cascadia TEX offers an innovative look with long-lasting performance for roofing and wall panel applications.

Printed Series

Printed products are manufactured using an offset gravure printing process. The result is a prepainted steel product that mimics the look of brushed aluminum, copper, look of woodgrains without maintenance, and more... All with the added benefits only steel substrates can provide. Printed products can be used in a wide variety of applications, both indoor and outdoor, as a more durable option for the look you desire.

Weathering Steel

Weathering Steel is high-strength, low-alloy steel that under normal atmospheric conditions provides the aesthetics of rust while maintaining a much lower corrosion rate than can be found with other structural steels. This product can be used in any application where a rusted appearance is desired.

PRE-PAINTED STEEL

SMP (Silicone-Modified Polyester)

SMP paint systems are developed using a blend of polyester and silicone agents. Silicone acts to improve the gloss retention and weather resistance of the polyester coating. As a rule, the higher the silicone content, the better the performance of the paint.

SMP prepainted steel has been used in the construction industry for decades and is preferred by many building owners due to the relative durability of the coating and the budget-friendly cost as compared to other more expensive paint systems. SMP paint systems comes with a standard 40-year limited warranty.

SMP prepainted steel is best suited for applications such as residential roofing, agricultural buildings, storage sheds, and other applications where color selection, coating performance, and durability are important to the overall project.

PVDF (Polyvinylidene Fluoride)

PVDF is a highly non-reactive and pure thermoplastic fluoropolymer used in a variety of applications where the highest purity, strength, and resistance to solvents, acids, bases, and heat are required. As an added bonus, PVDF has the ability to self-extinguish and generates little smoke in the event of a fire.

PVDF paint systems are developed using specialized ceramic pigments combined with fluoropolymer resins to create high-end coatings for metals. These PVDF paints have extremely good gloss and color retention, superior resistance to chalk and fade, and excellent resistance to the effects of weathering in harsh environments. PVDF paint systems typically come with a standard 40-year limited warranty offered by Westform Metals.

PVDF prepainted steel has been the go-to product for architects and designers around the world to achieve beautiful, vibrant colors with the added benefits of flexibility, durability, and low maintenance that only steel can provide.

PVDF prepainted steel is best suited for high-end applications such as commercial or residential roofing, pre-engineered buildings, architectural wall panels, facades, and other applications where durability and long-lasting performance are required.

PE (Polyester)

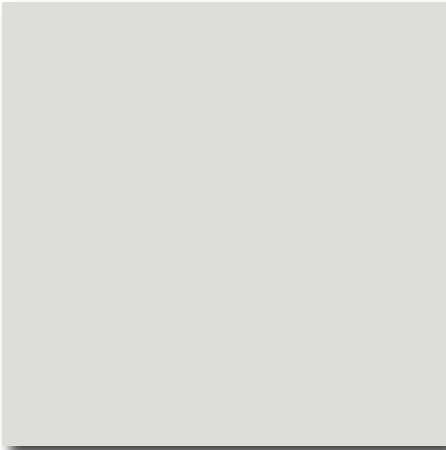
Polyester paint systems offer a hard, scratch resistant finish and a wide range of gloss options, but are prone to chalking when exposed to UV light. These paints can be developed with good weathering properties, but generally not equal to those of SMP or PVDF coatings.

Polyester prepainted steel is best suited for low-end applications such as rainwater goods, shade and shelter type buildings within the agricultural market, and other applications where durability and long-lasting performance are required.

Field Maintenance for Painted Metal Roofing, Wall Panels, and Accessories

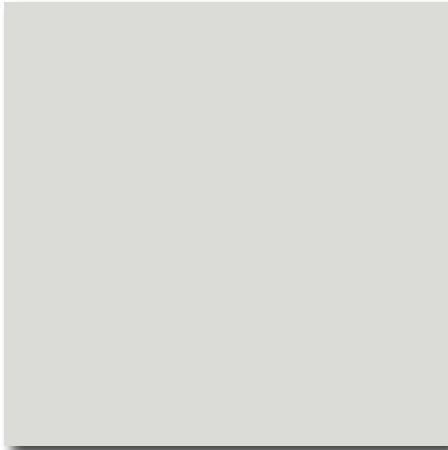
We advise routine cleaning of prepainted metal roofing, soffit, eaves, gutters, and wall panels to help maintain their overall appearance and performance. For more detailed information on cleaning prepainted metal products, please consult Cascadia Metals PrePainted Steel Technical Bulletin #2: Maintenance of prepainted Metal Roofing & Siding.

NOTE: COLORS SHOWN ARE APPROXIMATIONS, ACTUAL PRODUCT COLOR MAY VARY



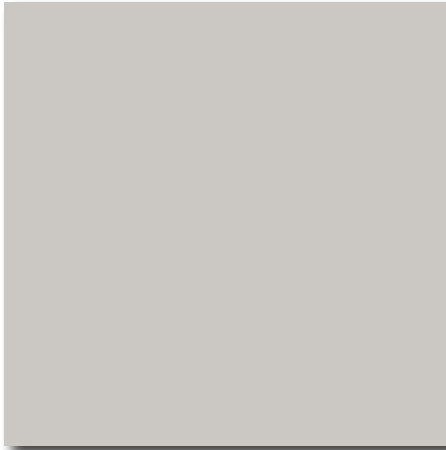
POLAR WHITE

GAUGE: 26, 24, 22



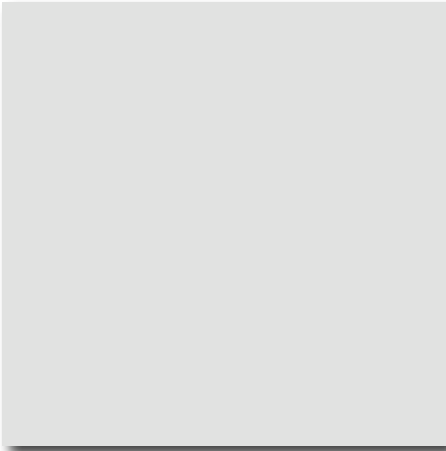
CAMBRIDGE WHITE

GAUGE: 26, 24, 22



WHITE WHITE

GAUGE: 29, 26, 24, 22



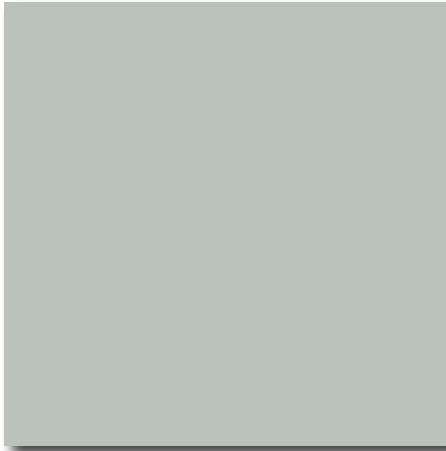
BRITE WHITE

GAUGE: 29, 26, 24



BONE WHITE

GAUGE: 29, 26, 24, 22



SURF WHITE

GAUGE: 26, 24, 22



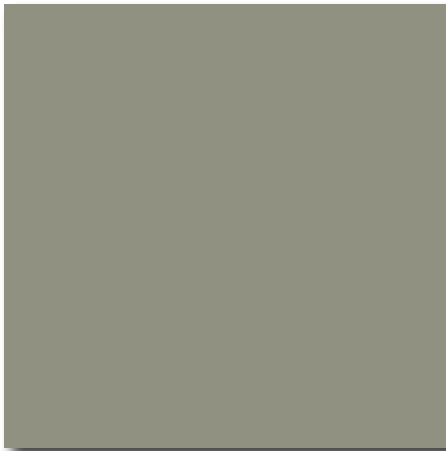
STONE GREY

GAUGE: 29, 26, 24, 22



REGENT GREY

GAUGE: 29, 26, 24, 22



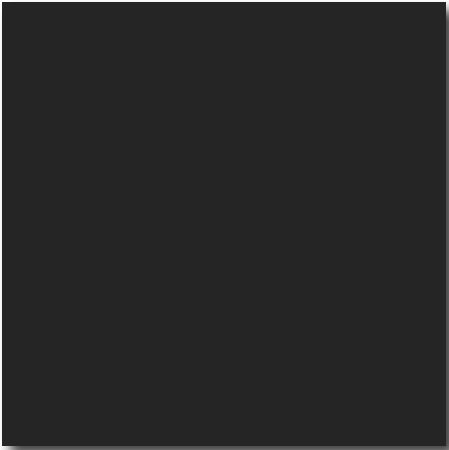
PEBBLESTONE

GAUGE: 26



CHARCOAL GREY

GAUGE: 29, 26, 24, 22



BLACK

GAUGE: 29, 26, 24, 22



BLACK COFFEE

GAUGE: 29, 26, 24



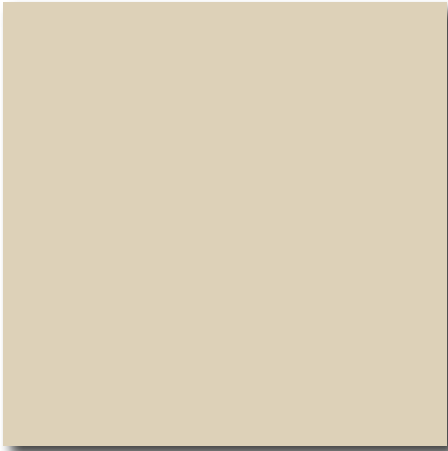
METRO BROWN

GAUGE: 29, 26, 24, 22



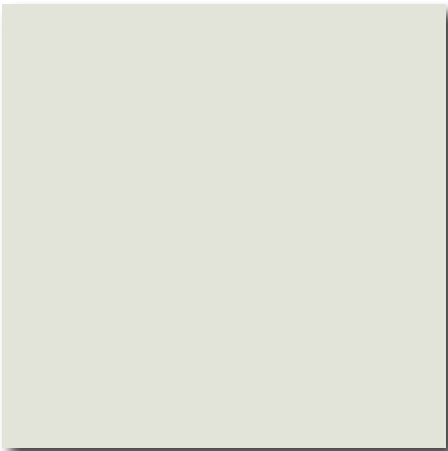
DARK BROWN

GAUGE: 29, 26, 24, 22



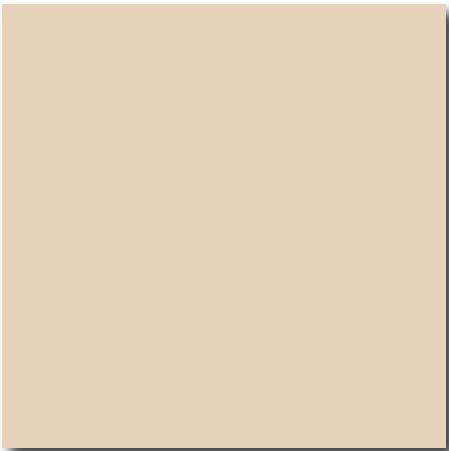
IVORY

GAUGE: 29



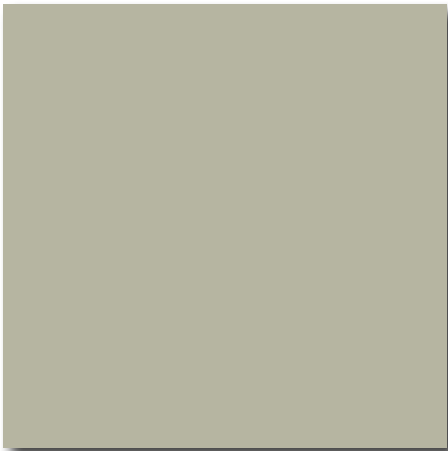
CASHMERE

GAUGE: 26, 24, 22



ANTIQUE LINEN

GAUGE: 26, 24



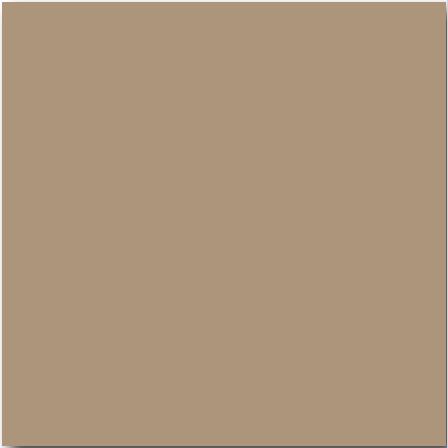
WICKER

GAUGE: 26, 24



BRIARWOOD TAN

GAUGE: 26, 24



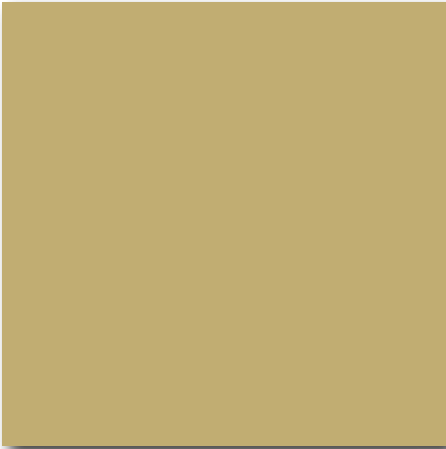
TAN

GAUGE: 29, 26, 24, 22



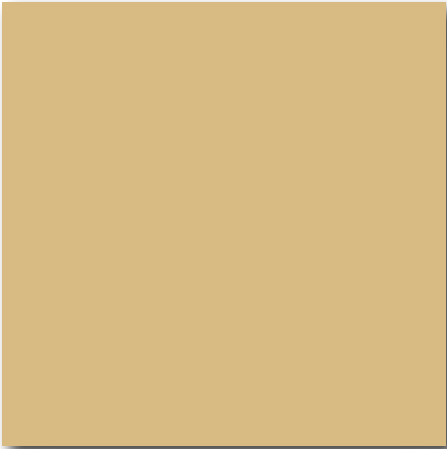
BUCKSKIN

GAUGE: 29, 26



GOLD

GAUGE: 29, 26, 24



SPORTSMAN YELLOW

GAUGE: 29



BRITE RED

GAUGE: 29, 26, 24



DARK RED

GAUGE: 29, 26, 24



TILE RED

GAUGE: 29, 26, 24



BURGUNDY

GAUGE: 29, 24



LABRADOR BLUE

GAUGE: 24



HERON BLUE

GAUGE: 29, 26, 24



ROYAL BLUE

GAUGE: 29, 26, 24



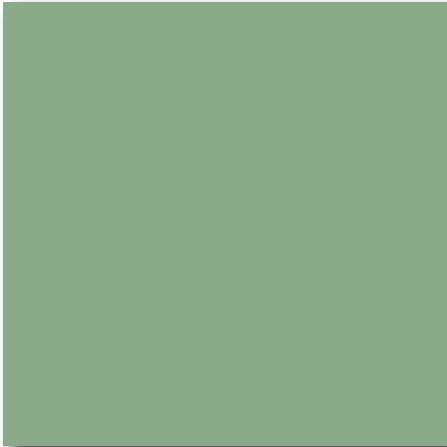
SLATE BLUE

GAUGE: 29, 26, 24, 22



SAPPHIRE BLUE

GAUGE: 29, 26, 24



MIST GREEN

GAUGE: 26, 24



SAGE GREEN

GAUGE: 26, 24



TURQUOISE

GAUGE: 29, 26



PACIFIC TURQUOISE

GAUGE: 26, 24



DEEP WATER GREEN

GAUGE: 29, 26, 24



FOREST GREEN

GAUGE: 26, 24



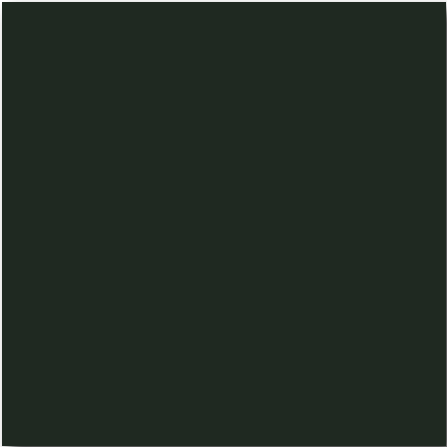
SPRUCE GREEN

GAUGE: 24



MELCHERS GREEN

GAUGE: 29, 26, 24



DARK GREEN

GAUGE: 26, 24



IRON ORE

GAUGE: 29, 26, 24, 22



BRITE GREEN

GAUGE: 29



INTERNATIONAL ORANGE

GAUGE: 26, 24



BURNISHED SLATE

GAUGE: 24



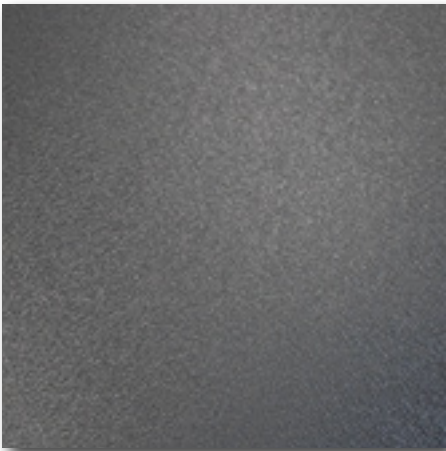
GRAPHITE

GAUGE: 26, 24



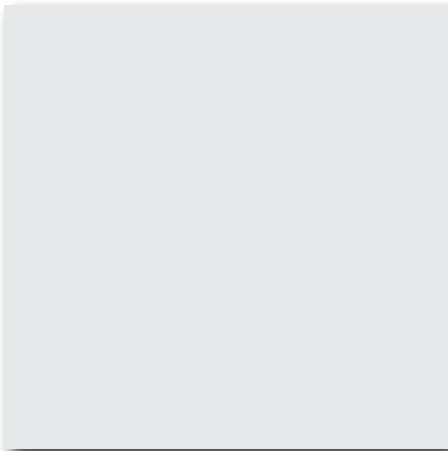
KONA BROWN

GAUGE: 24



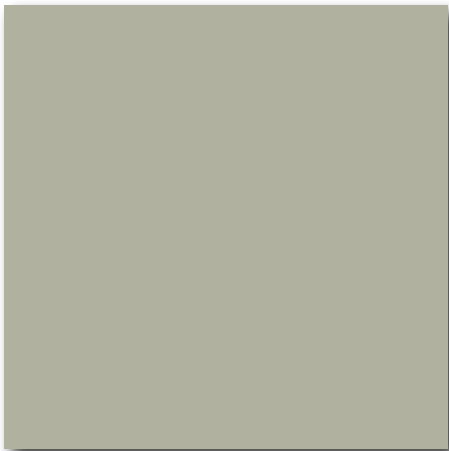
BLACK ONYX

GAUGE: 26, 24



REGAL WHITE

GAUGE: 24, 22



PARCHMENT

GAUGE: 24, 22



SIERRA TAN

GAUGE: 24



CHAMPAGNE METALLIC

GAUGE: 24



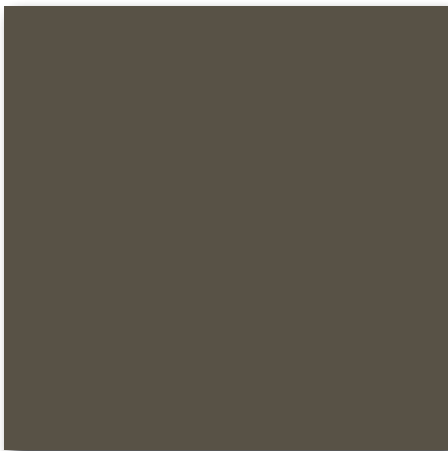
MOCHA

GAUGE: 24



WEATHERED COPPER

GAUGE: 26, 24, 22



BRONZE

GAUGE: 24



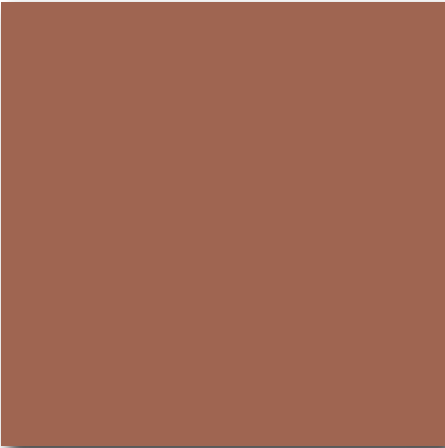
DARK BRONZE

GAUGE: 26, 24, 22



COPPER PENNY

GAUGE: 26, 24, 22



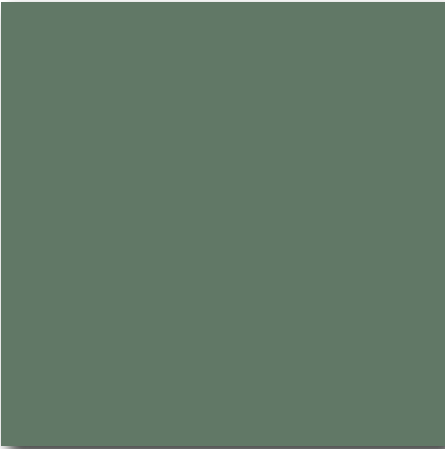
TERRA COTTA
GAUGE: 26, 24, 22



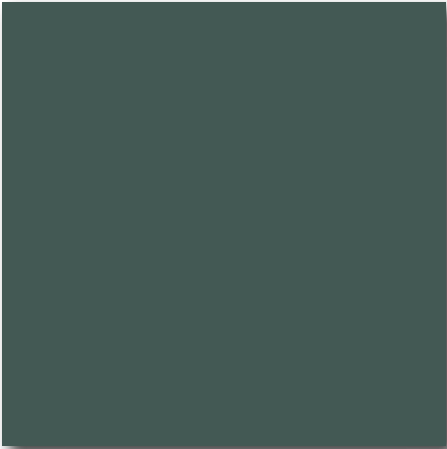
COLONIAL RED
GAUGE: 26, 24



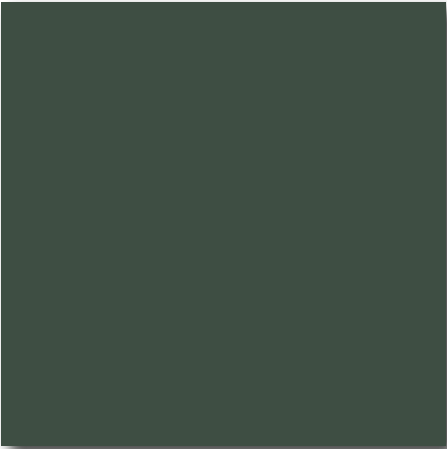
RETRO RED
GAUGE: 24



HEMLOCK GREEN
GAUGE: 24



DARK GREEN
GAUGE: 26



HARTFORD GREEN
GAUGE: 24



FOREST GREEN
GAUGE: 24



TWILIGHT BLUE
GAUGE: 24



TAHOE BLUE
GAUGE: 26



REGAL BLUE

GAUGE: 24, 22



SILVER METALLIC

GAUGE: 26, 24, 22



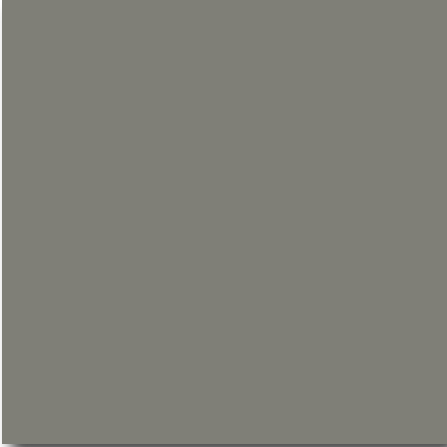
OLD TOWN GREY

GAUGE: 24, 22



WEATHERED ZINC

GAUGE: 26, 24, 22



OLD ZINC GREY

GAUGE: 24, 22



SLATE GREY

GAUGE: 24, 22



LOW GLOSS BLACK

GAUGE: 26, 24, 22

PVDF PRINTED PREPAINTED STEEL



ACORN

GAUGE: 24



AGED COPPER

GAUGE: 24



AUTUMN

GAUGE: 24



BARN BOARD

GAUGE: 24



BIRCH

GAUGE: 24



CANYON

GAUGE: 24



DARK ZINC

GAUGE: 24



DURANGO

GAUGE: 24



ESPRESSO

GAUGE: 24

PVDF PRINTED PREPAINTED STEEL



FRONTIER

GAUGE: 24



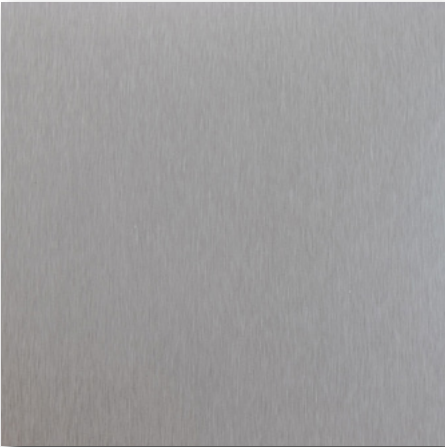
GUNSTOCK

GAUGE: 24



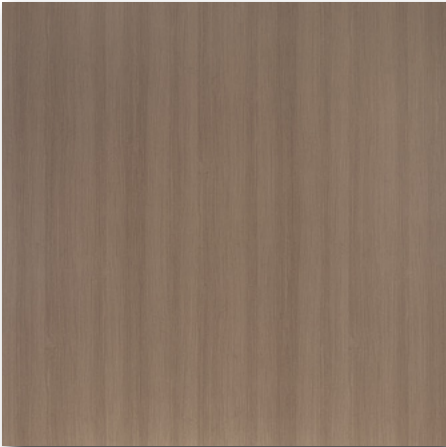
HOMESTEAD

GAUGE: 24



LIGHT ZINC

GAUGE: 24



PONDEROSA

GAUGE: 24



RUSTIC RED

GAUGE: 24



SADDLE

GAUGE: 24



WAGONWOOD

GAUGE: 24

POLYESTER PRINTED PREPAINTED STEEL



ASHWOOD

GAUGE: 24



CONCRETE

GAUGE: 24



CORTEN

GAUGE: 24



KNOTTY PINE

GAUGE: 24



LIGHT PINE

GAUGE: 24



MESQUITE

GAUGE: 24

STEEL



GALVANIZED

GAUGE: 29, 26, 24, 22, 20, 18, 16



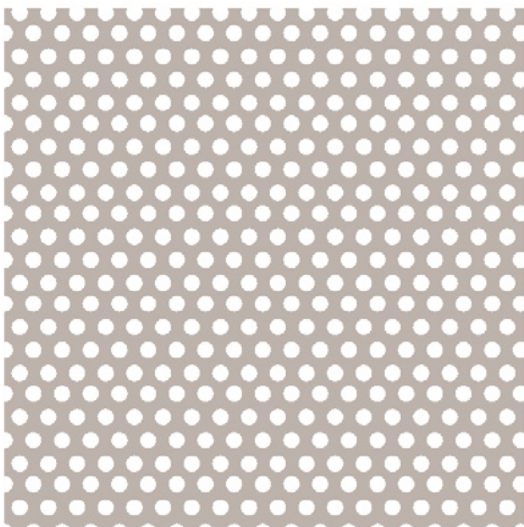
GALVALUME

GAUGE: 29, 26, 24, 22



WEATHERING STEEL

GAUGE: 22



PERFORATED OPTIONS

Material	Availability	Perf. Pattern	Net Free Area
-22ga Galvanized	4'x10' Flats	1/8" x 7/32"	30%
-24ga Black/Charcoal Grey	Coil 4' wide	1/8" x 7/32"	30%
-22ga Black/Charcoal Grey	Coil 4' wide	1/8" x 7/32"	30%
-24ga Galvalume	Coil 4' wide	1/8" x 7/32"	30%
-26ga Black/Black	Coil 4' wide	1/8" x 7/32"	30%
-29ga Brite White	Coil 41" wide	1/8" x 3/8"	10%
-29ga White White	Coil 41" wide	1/8" x 3/8"	10%
-29ga Black	Coil 41" wide	1/8" x 3/8"	10%
-29ga Charcoal Grey	Coil 41" wide	1/8" x 3/8"	10%

SPECIFICATIONS



COATING TEST METHOD		POLY	SMP	PVDF
Dry Film Thickness	ASTM D 1400-94 ASTM D 1005-95	0.75 - 1.85 Mil 0.90 - 1.15 Mil	0.75 - 1.85 Mil 0.90 - 1.15 Mil	0.75 - 1.85 Mil 0.90 - 1.15 Mil
Specular Gloss	ASTM D 523-89 @60°	20-35	20-35	20-35
Humidity Resistance	ASTM D 2247 (100% relative humidity @95°)	Passes 1000 hours	Passes 1000 hours	Passes 2000 hours
Salt Spray	ASTM B 117 (5% salt spray @95°)	Passes 1000 hours	Passes 1000 hours	Passes 1000 hours
Acid Pollutant	ASTM D 1308-87 20% sulfuric acid 18 hours, 10% muriatic acid 15 minutes	NO EFFECT	NO EFFECT	NO EFFECT
Chalk Resistance	ASTM D 4214 Hunter Units (Florida exposure @ 45° S)	Rating not<8 @ 20 years	Rating not<8 @ 30 years	Rating not<8 @ 40 years
Color Retention	ASTM D 4214 Hunter Units (Florida exposure @ 45° S)	Rating not<8 @ 20 years	Rating not<8 @ 30 years	Rating not<8 @ 40 years
Adhesion/Reverse Impact	ASTM D 3359-95a (Reverse impacted 1/16" crosshatched) ASTM D 2794-93 (3,000 x inches of metal thickness)	NO ADHESION LOSS	NO ADHESION LOSS	NO ADHESION LOSS
		NO ADHESION LOSS	NO ADHESION LOSS	NO ADHESION LOSS
Pencil Hardness	ASTM D 3363	H <	H-25 (NCCA II-12)	HB-H
Flexibility T-Bend	ASTM D 4145-83	2T no pickoff	2T no pickoff	2T no pickoff
Abrasion Resistance	ASTM D 968-93 (To expose 5/32" of substrate)	15 Litres	25-40 Litres	100 Litres
Graffiti Resistance	ASTM D 6578 (Cleanability of defaced panels - spray paint, pens, etc.)	NO EFFECT	NO EFFECT	NO EFFECT

6435 Lickman Road
Chilliwack, British Columbia
Canada V2R 4A9

Tel: 604.858.7134
Toll Free: 1800.663.6322

27323 - 120 TWP Rd 394
RR1 Site 1, Box 23
Blackfalds, Alberta
Canada T0M 0J0
Tel: 403.885.3752
Fax: 403.885.3730