

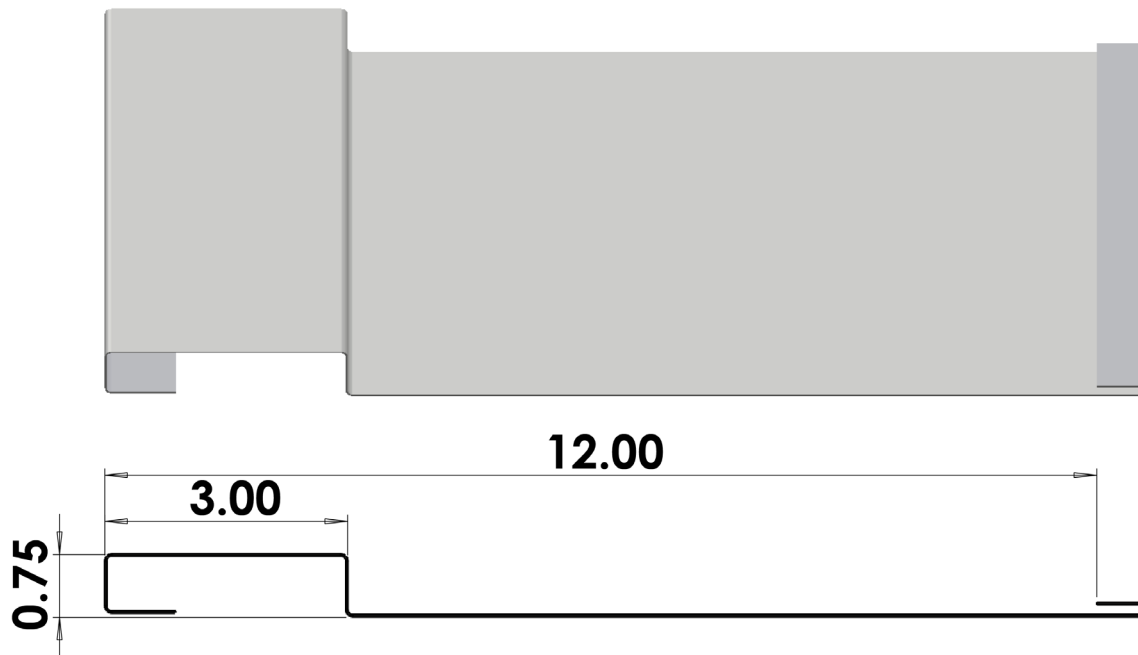


BOARD & BATTEN

Installation Guide



Profile



Standards

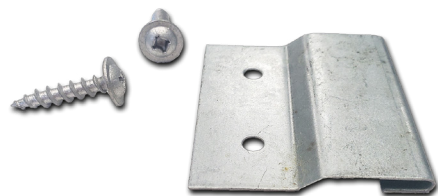
Board & Batten sheet steel cladding shall be manufactured in accordance to:

- CSSBI 23M-2016 Standard for Residential Steel Cladding
- CSSBI 20M-2017 Standard for Sheet Steel Cladding for Industrial, Commercial and Institutional Building Applications

Fastening

Board & Batten is fastened to the wall with the use of an adjustable floating clip system.

Spacing: Max. 24" unless specified by an engineer
Fasteners: #10 ACQ Panhead(Wood)
#10 Panhead Driller(Metal)
Not included with clip



Material Preparation

Remove any protective film from panels as well as flashing trims. Leaving film for an extended time exposed to the sun/UV light will increase the difficulty of removing the protective film. Best practice for removing film is to start at one end peeling back the tape until the profile is free. Continue to peel film at a low angle in a steady motion. Removing at a high angle and applying too much pressure will tear the film.

Storage

Storage time should be minimized by installing the cladding panels as soon as possible after delivery. Good planning will ensure that panels are used on a first-in first-out basis. If cladding must be stored for an extended period, the most desirable storage place is under-roof in a cool, dry, well ventilated area. When storing outdoors is unavoidable, the following is recommended:

- (1) use good covers, loosely shrouded over stacks and firmly anchored to prevent wind blow off, but plastic covers should not be used for storage
- (2) tilt bundles for drainage
- (3) ventilate bundles but do not allow entry of wind-driven rain
- (4) block bundles off the ground for effective drainage and ventilation
- (5) block long panels to prevent sagging
- (6) store out of direct sunlight if possible
- (7) store away from chemically aggressive substances (e.g. salt, cement, fertilizer), away from material that could contaminate the surface (e.g. diesel oil, paint, grease) and away from site traffic.

Shipments of bundled cladding panels should be inspected upon delivery. Moisture can cause wet storage staining of prefinished material and usually occurs in one of three ways:

- (1) condensation from high humidity and/or temperature cycling.
- (2) wet shipping conditions.
- (3) wind -driven rain penetration (outdoor storage). The usual progression is from visible water staining to unsightly white staining (dark grey to dull black on aluminum zinc alloy coated material) to red rust. On material where wet storage staining has occurred, it should be noted that nominal amount of white staining is not detrimental to the functioning of the product and is usually considered acceptable.

For further information on care and maintenance refer to: **CSSBI SSF 03-17 Fact Sheet**

Cutting Cladding

Board and Batten recommended cutting options:

- (1) A circular saw with a cross cut jig and appropriate blade for sheet steel materials
- (2) Rip cuts with power hand shears/nibblers
- (3) Aviation hand snips

An abrasive disk blade with a angle grinder or power saw is NOT recommended.

Circular Saw with
cross cut jig



Power Hand Shears



Aviation Hand Snips



Installation Precautions

Pressure Treated Wood

It is recommended that all galvanized or painted sheet steel roofing or siding products be separated from ACQ pressure treated wood with Ice & Water Shield membrane or similar product. The use of roofing felts is not an adequate separator. For more information on sheet steel products and pressure treated wood refer to **CSSBI SSF 18-10 Fact Sheet**

Handling

Remember to always use leather faced gloves when handling metal cladding and trims. Also, if using a saw to cut prepainted sheets, make sure that the painted surface is protected because the hot filings will damage the paint finish.

Personal Protection

The erector's employees shall wear such personal protective clothing, equipment or devices as deemed necessary for the individual's protection from the particular hazards associated with the installation of steel products. This equipment should include, but is not limited to, safety hats, safety belts, safety footwear, eye protection and gloves.

Details

Attached are typical standard installation details. It is the responsibility of the installer to follow all provincial, regional and municipal building codes.

Substrate plane must be level and plumb. Non-level/plumb planes can introduce stresses on the panel resulting in a wavy appearance.

Underlay

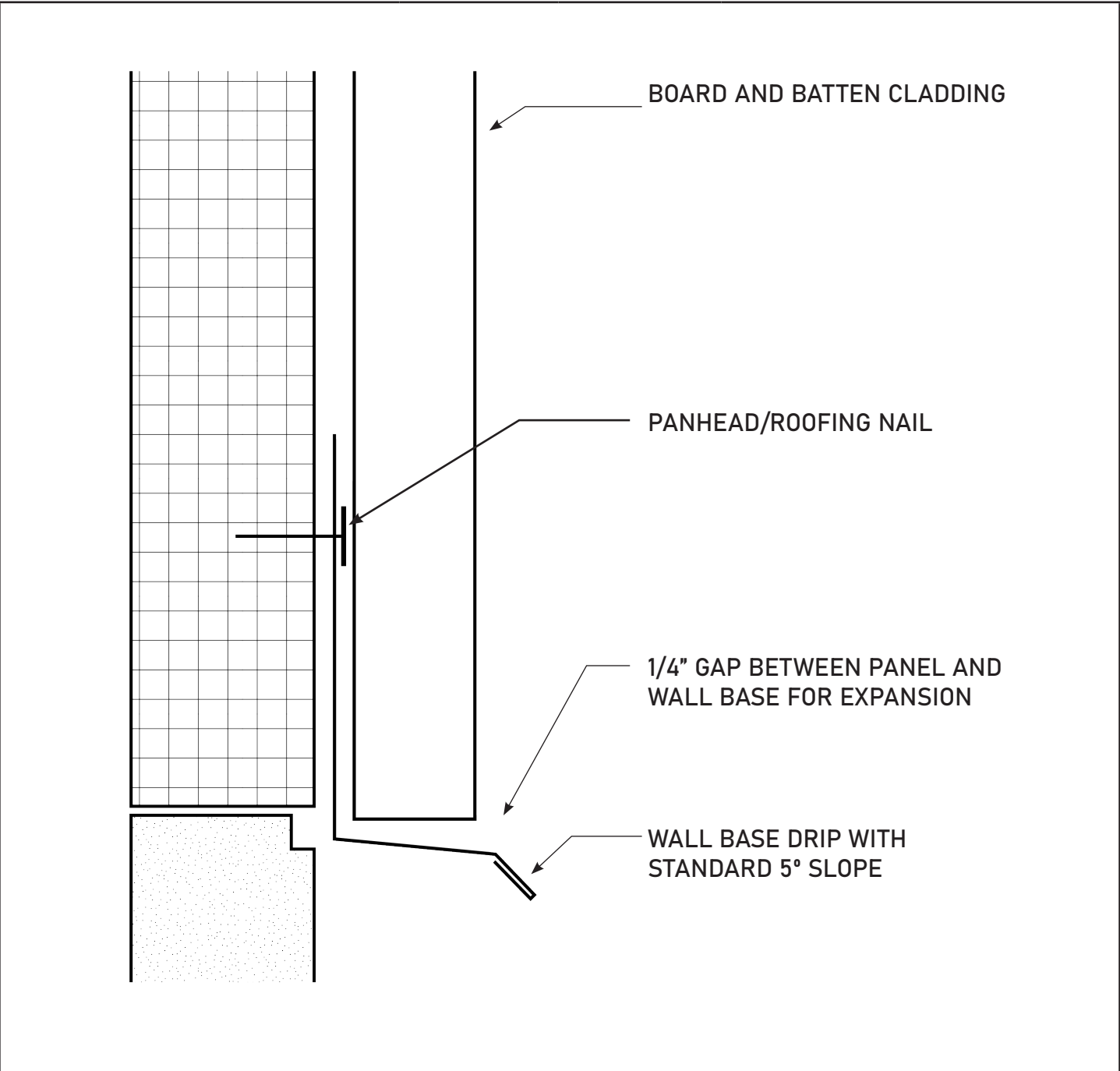
Install wall underlay as per manufacturers recommendations.

Panel Layout

(A) Using a chalk line, layout a level horizontal line around the project walls.

(B) Chalk a vertical plumb line on each wall using the 3-4-5 square method from the horizontal line.

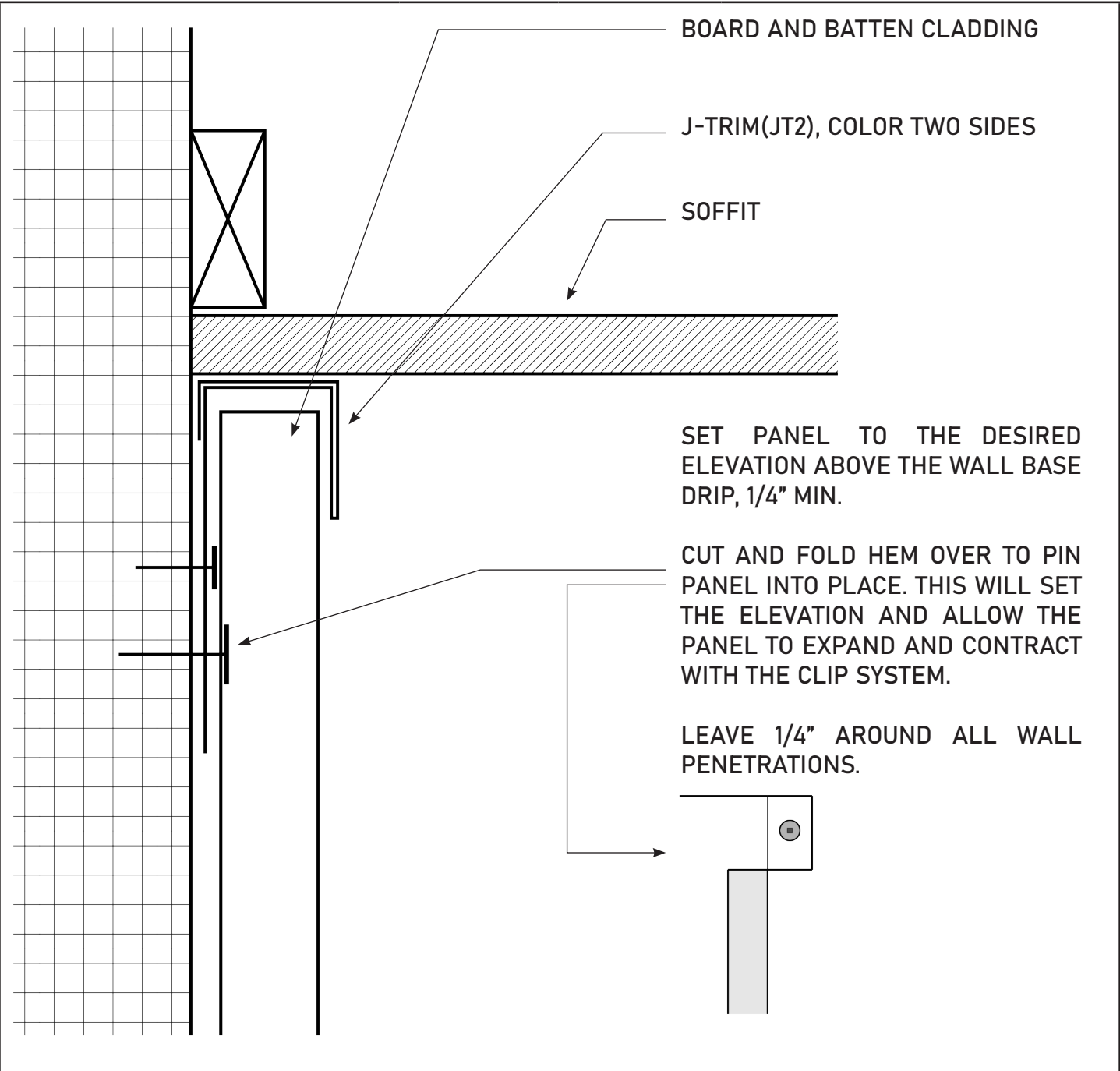
Note: It is common practice to layout panel orientation from the back of the wall section working towards the front of the building. This way the lap edge of the panel connection is facing the back of the project creating a cleaner appearance from the front of the building.



Notes:

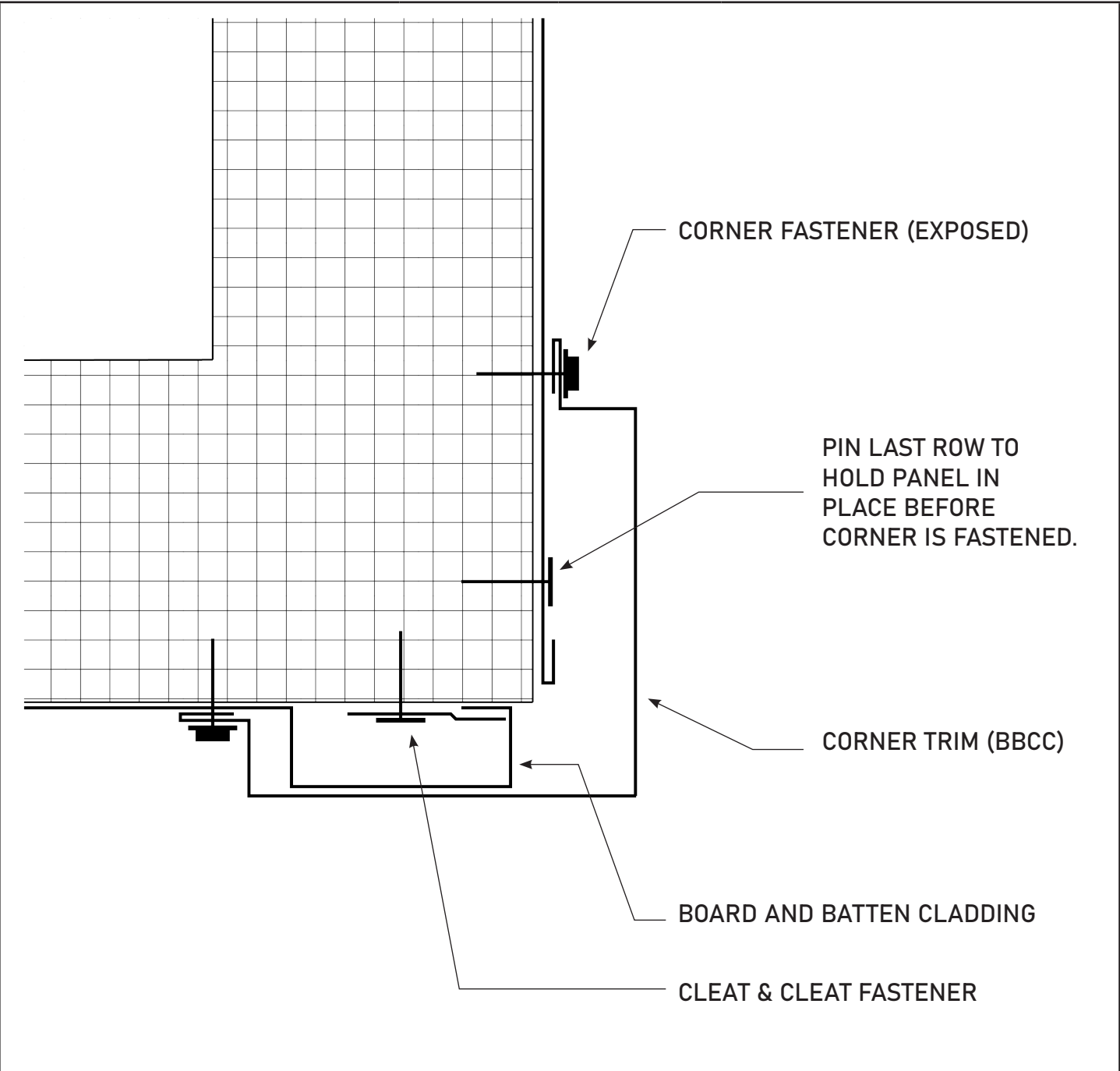
- Detail is not to scale.
- Wall plane must be level and plumb.
- Fastening clip recommended spacing is 24" on center.
- It is the responsibility of the installer to follow all applicable building codes.
- If J trim is to be used for top and bottom of panel it is recommended to use a EZLOK J for one side to fit in the panel.

WALL BASE DRIP FLASHING	BB-1	2023	WESTFORM METALS BOARD AND BATTEN
-------------------------	------	------	----------------------------------



- Notes:
- Detail is not to scale.
 - Wall plane must be level and plumb.
 - Fastening clip recommended spacing is 24" on center.
 - It is the responsibility of the installer to follow all applicable building codes.
 - If J trim is to be used for top and bottom of panel it is recommended to use a EZLOK J for one side to fit in the panel.

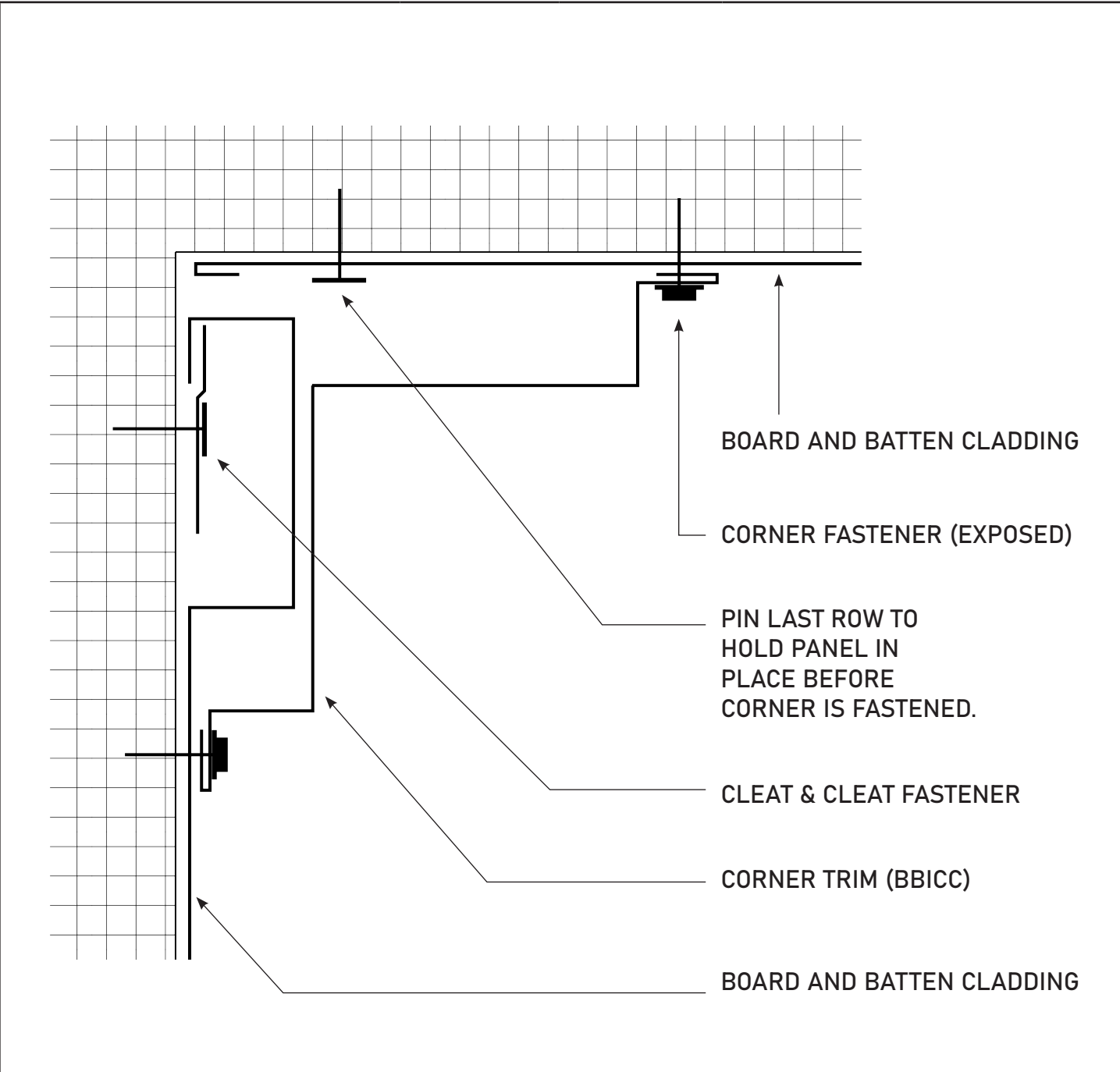
TOP OF WALL FLASHING	BB-2	2023	WESTFORM METALS BOARD AND BATTEN
----------------------	------	------	----------------------------------



Notes:

- Detail is not to scale.
- Wall plane must be level and plumb.
- Fastening clip recommended spacing is 24" on center.
- It is the responsibility of the installer to follow all applicable building codes.

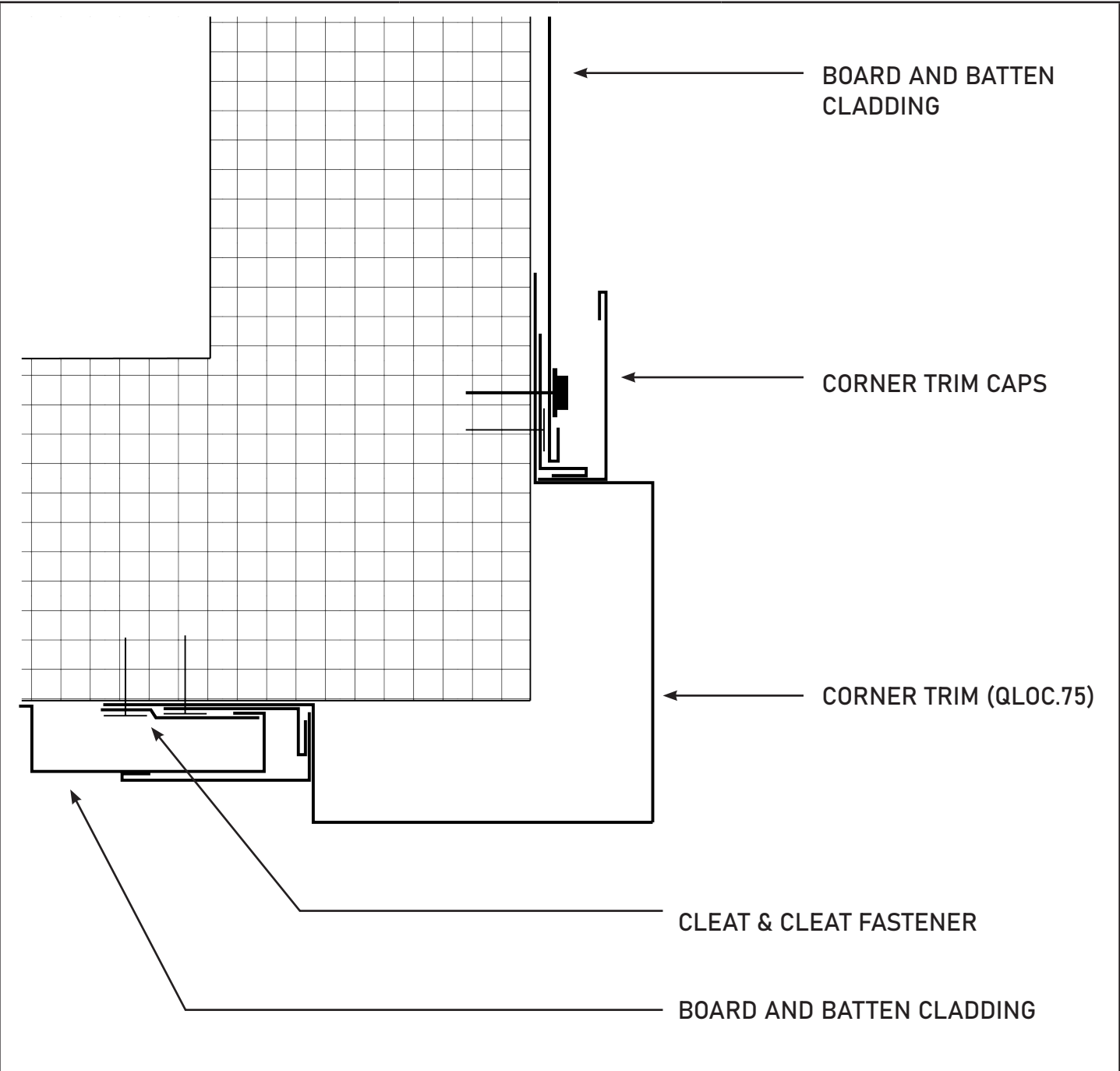
OUTSIDE CORNER (EXPOSED FASTENER)	BB-3	2023	WESTFORM METALS BOARD AND BATTEN
--------------------------------------	------	------	-------------------------------------



Notes:

- Detail is not to scale.
- Wall plane must be level and plumb.
- Fastening clip recommended spacing is 24" on center.
- It is the responsibility of the installer to follow all applicable building codes.

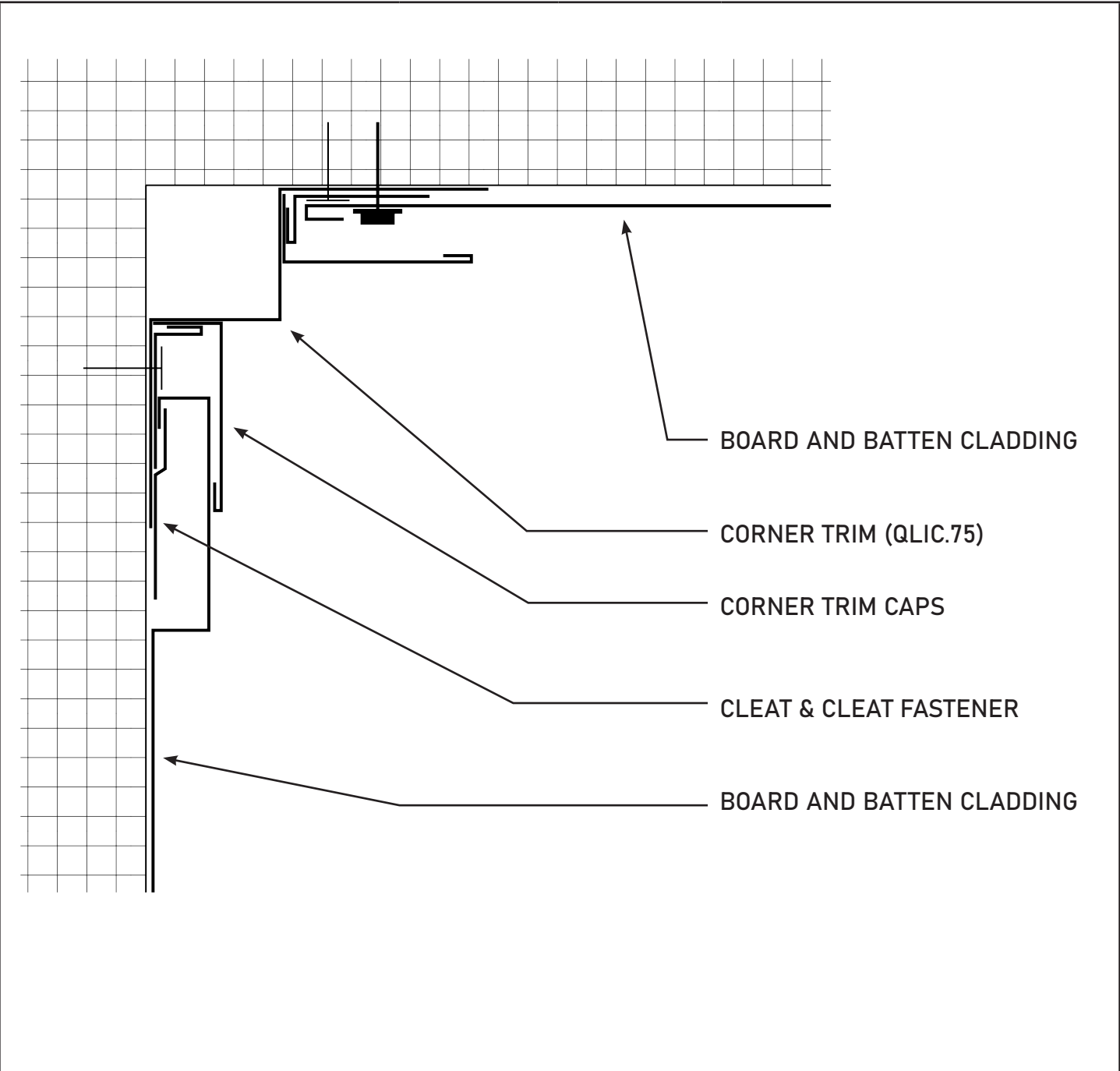
INSIDE CORNER (EXPOSED FASTENER)	BB-4	2023	WESTFORM METALS BOARD AND BATTEN
-------------------------------------	------	------	-------------------------------------



Notes:

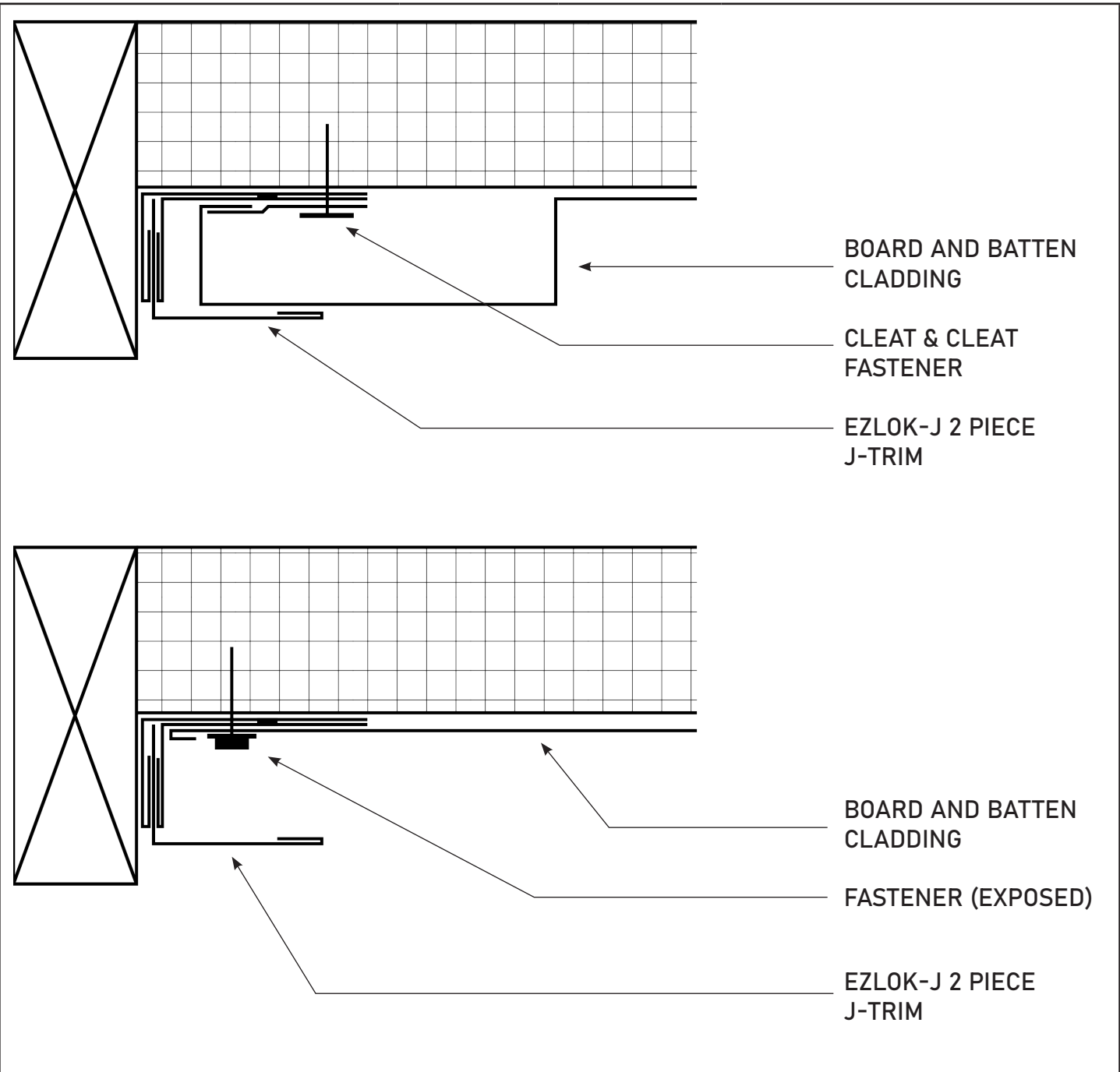
- Detail is not to scale.
- Wall plane must be level and plumb.
- Fastening clip recommended spacing is 24" on center.
- It is the responsibility of the installer to follow all applicable building codes.

OUTSIDE CORNER (HIDDEN FASTENER)	BB-5	2023	WESTFORM METALS BOARD AND BATTEN
-------------------------------------	------	------	-------------------------------------



- Notes:
- Detail is not to scale.
 - Wall plane must be level and plumb.
 - Fastening clip recommended spacing is 24” on center.
 - It is the responsibility of the installer to follow all applicable building codes.

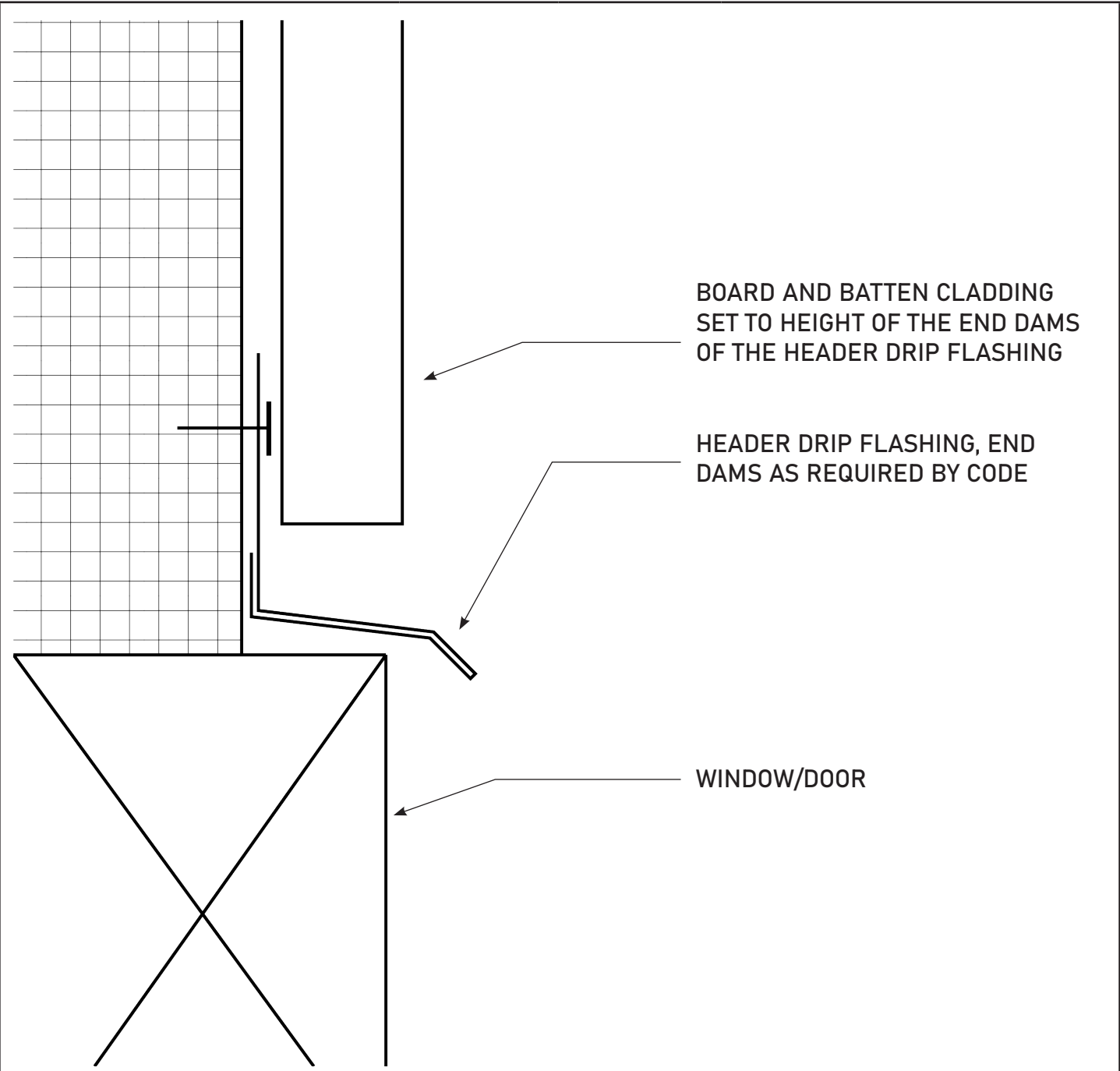
INSIDE CORNER (HIDDEN FASTENER)	BB-6	2023	WESTFORM METALS BOARD AND BATTEN
------------------------------------	------	------	-------------------------------------



Notes:

- Detail is not to scale.
- Wall plane must be level and plumb.
- Fastening clip recommended spacing is 24" on center.
- It is the responsibility of the installer to follow all applicable building codes.

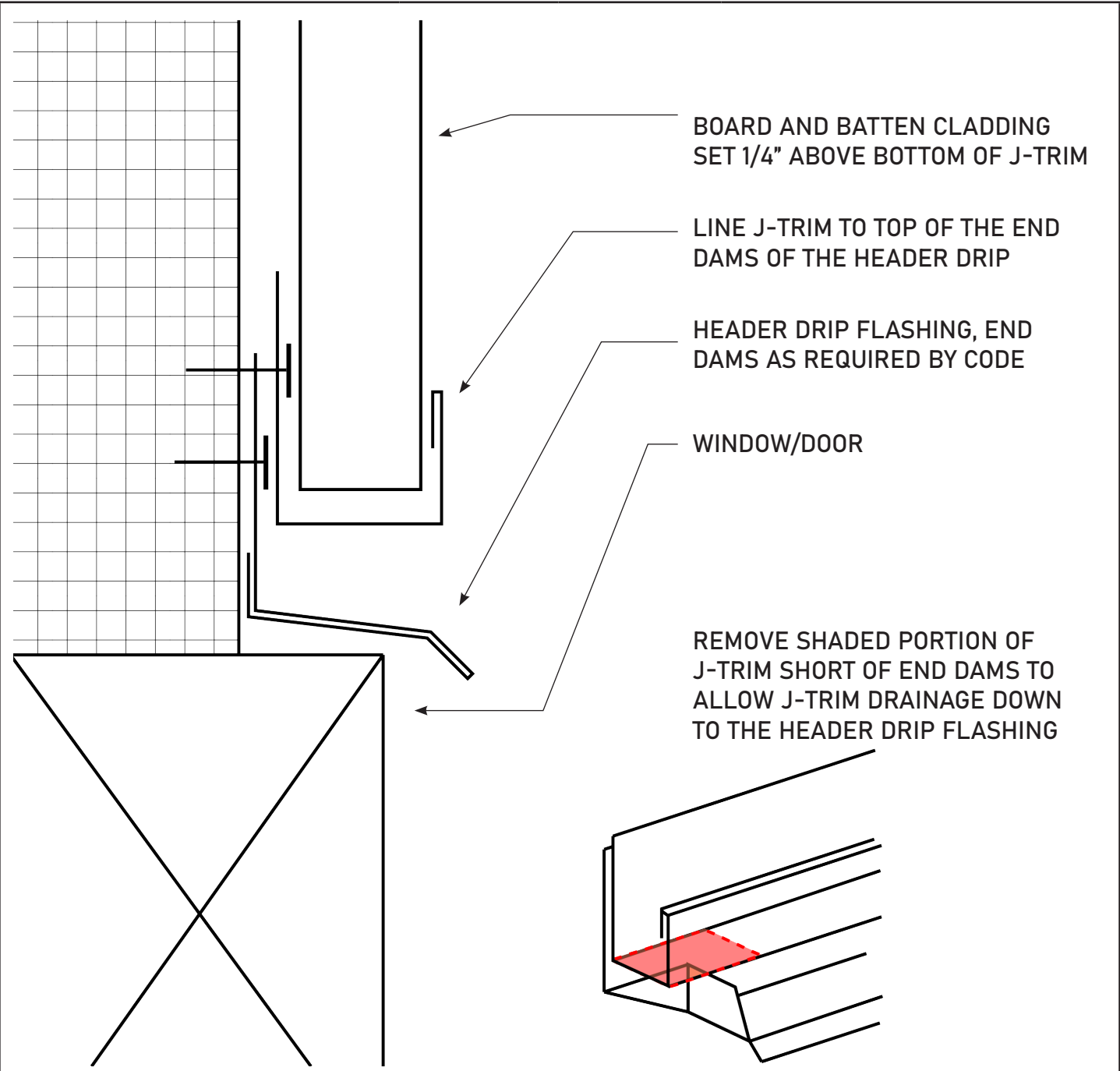
WINDOW/DOOR JAMB	BB-7	2023	WESTFORM METALS BOARD AND BATTEN
------------------	------	------	-------------------------------------



Notes:

- Detail is not to scale.
- Wall plane must be level and plumb.
- Fastening clip recommended spacing is 24" on center.
- It is the responsibility of the installer to follow all applicable building codes.

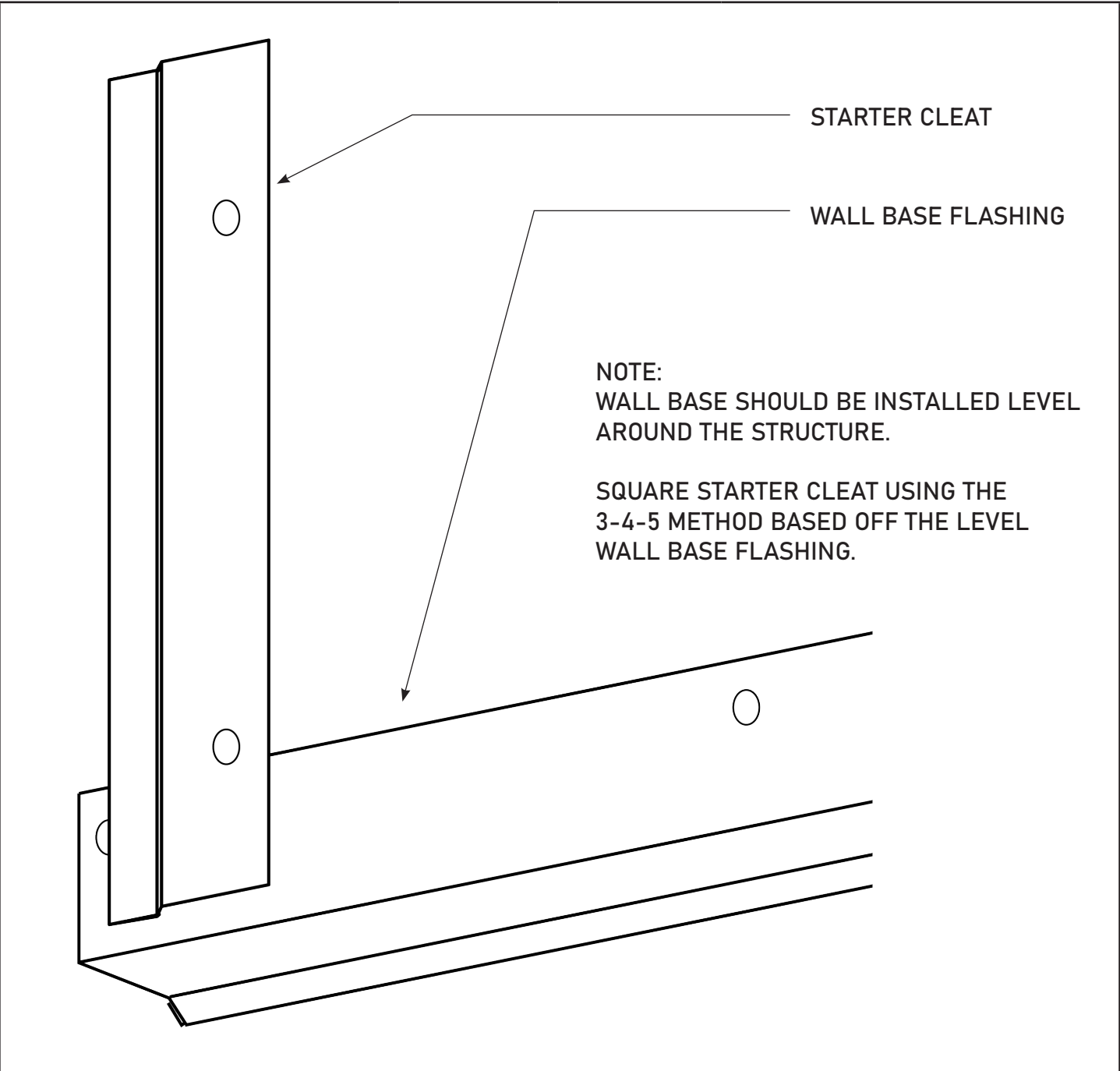
WINDOW/DOOR HEADER OPTION A	BB-8	2023	WESTFORM METALS BOARD AND BATTEN
--------------------------------	------	------	-------------------------------------



Notes:

- Detail is not to scale.
- Wall plane must be level and plumb.
- Fastening clip recommended spacing is 24" on center.
- It is the responsibility of the installer to follow all applicable building codes.
- If J trim is to be used for top and bottom of panel it is recommended to use a EZLOK J for one side to fit in the panel.

WINDOW/DOOR HEADER OPTION B	BB-9	2023	WESTFORM METALS BOARD AND BATTEN
--------------------------------	------	------	-------------------------------------



- Notes:
- Detail is not to scale.
 - Wall plane must be level and plumb.
 - Fastening clip recommended spacing is 24" on center.
 - It is the responsibility of the installer to follow all applicable building codes.

STARTING CLEAT	BB-10	2023	WESTFORM METALS BOARD AND BATTEN
----------------	-------	------	-------------------------------------